

BT SOFT PLUS DOUBLE ELBOW BRACE



With BT Soft Plus, protecting an elbow affected by hygromas, sores and calluses is dead simple. The brace is also ideal for use in the presence of conditions such as arthritis, arthrosis or elbow displasia. This is because the compression it provides increases the blood pressure in the area, thus raising the temperature and reducing the pain caused by the conditions. It is also perfect for containing post-operative dressings in direct contact with the skin, such as in the case of surgical operations on dogs suffering from bilateral sterile inflammation of the olecranon bursa.

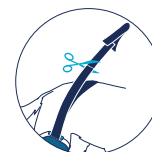
ADVANTAGES

Great freedom of movement as the dog races towards rapid recovery: that is the promise of a brace with such excellent performance as the BT Soft Plus.

The comfortable replaceable padding combines convenience, comfort and excellent stability. BT Soft Plus is a loyal friend for your dog's health.

FEATURES

- ▶ The brace can be used in pre- and in post-surgery.
- ▶ Breathable fabric.
- ▶ Excellent wearability.
- ▶ The box contains two spare pads.
- ▶ Hand washable.
- ▶ Shortenable bandages.

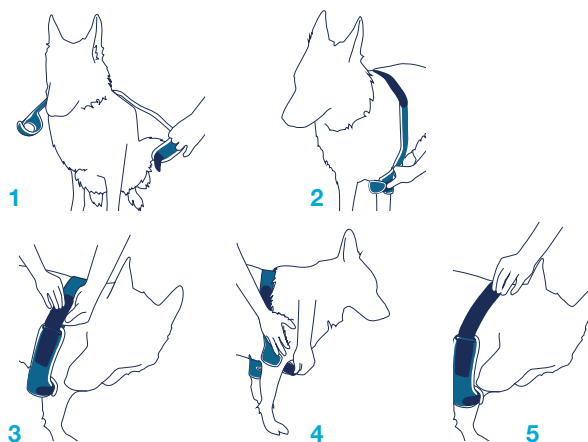


RECOMMENDATIONS FOR USE

- ▶ During the period of restraint, it is advisable not to leave the dog alone for too long, because it might try to remove the brace, by biting or scratching it.

SIZES

Available in four adjustable sizes.



balto
ORTHOPAEDIC BRACES FOR ANIMALS
by JOYVET