

## BT SOFT ELBOW BRACE



BT Soft is the perfect companion for looking after the dog's elbow, protecting it in the case of hygromas, sores and elbow calluses. The brace is also ideal for use in the presence of conditions such as arthritis, arthrosis or elbow dysplasia. This is because the compression it provides increases the blood pressure in the area, thus raising the temperature and reducing the pain caused by the conditions. It keeps the injured area compressed and is extremely efficient also to protect medications applied to the skin after surgery.

### ADVANTAGES

With its replaceable padding, the BT Soft brace combines top performance with maximum comfort. Used after surgery, it facilitates recovery in trouble-free convalescence.

### FEATURES

- ▶ The brace can be used in pre- and in post-surgery.
- ▶ Breathable fabric.
- ▶ Excellent wearability.
- ▶ The box contains two spare pads.
- ▶ Hand washable.
- ▶ Shortenable bandages.

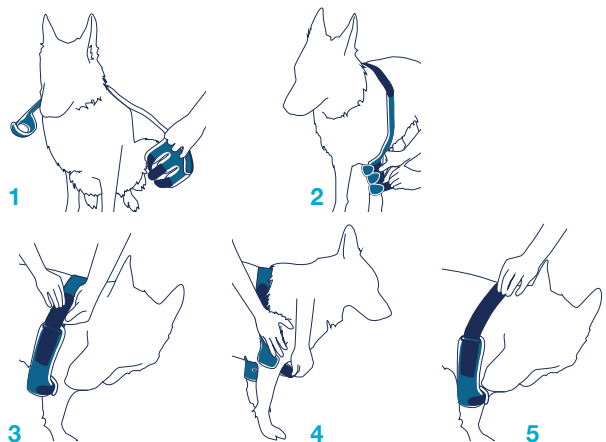


### RECOMMENDATIONS FOR USE

- ▶ During the period of restraint, it is advisable not to leave the dog alone for too long, because it might try to remove the brace, by biting or scratching it.

### SIZES

Available in four adjustable sizes, for left and right.



**balto**  
ORTHOPAEDIC BRACES FOR ANIMALS  
by JOYVET s.r.l.